

Heavy Manufacturing Plate Fiber Laser With Exchange Tables

LF6025GH

Bed Size: 6000x2500mm (additional sizes available)

Laser Source: MAX, Raycus or IPG

Power: 12kW, 20kW, 30kW

FROM

\$279,500+GST

Price of 12kW Power Machine



The LF6025GH is our Heavy Manufacturing Fiber laser cutting machine, with solid plate welded 18T chassis and our largest available motor set, for a huge 2.5G acceleration and 200m/min moving speed. Beat the competition on production time, shorten your customer lead times and cut thicker than you ever have before. Cut up to 25mm Mild Steel with 6kW, 40mm with 12kW or 90mm with 20kW power! See our options page for automatic loading and unloading solutions.



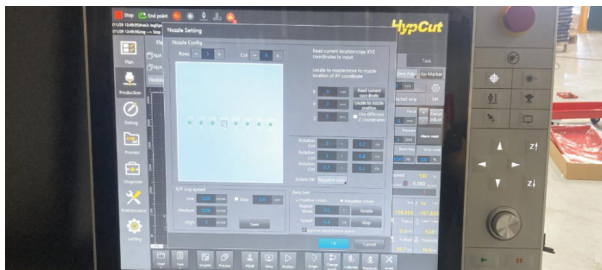
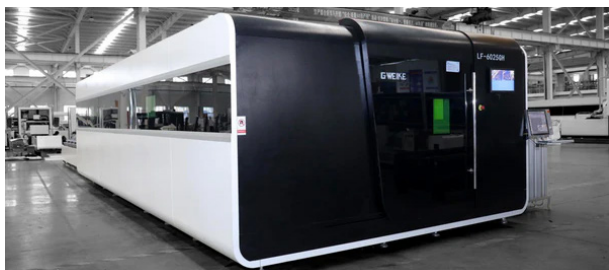
WHY BOCI?

Easy servicing
Lens monitoring
Gas monitoring
Precision Tracking



Features:

- 6000x2500mm fully enclosed machine with loading table
- 2.5G Huge acceleration, maximising overall production speed
- Separate air-conditioned electrical cabinet
- Built in internal cameras and monitoring screen
- Hypcut software - Production level software with cloud control, remote access giving remote office control and live reporting
- Automatic edge seeking, Fly cutting, Nesting etc
- BCS100 Automatic material tracking - Follows material surface allowing cutting of materials with sight bending or warping
- BOCI automatic focussing laser head
- Large Portrait style monitor screen
- Aviation 3rd generation aluminium gantry - Lightweight/strong
- YYC rack and pinion gear system
- Built-in computer, screen and wireless controller
- French Moto Reducer gear reducer
- Heavy Solid plate welded chassis - 18T overall machine weight
- Automatic lubrication system
- Ball bearing rollers for loading on the front
- Drive assembly below the bed on both sides allowing for easy loading and offloading
- Head tracking under-table exhaust system- follows the head while cutting for maximum extraction, exhaust fan included
- Electronic regulators for all gas connections O2, N2 and compressed air, allowing for fully software-controlled pressure

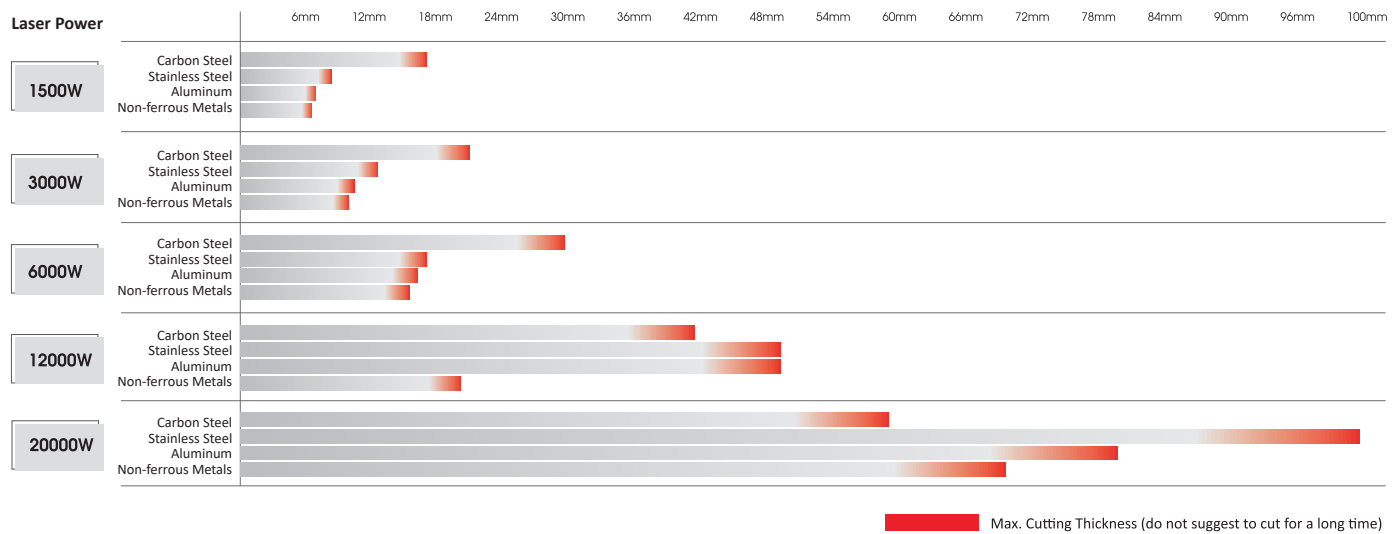


Professional delivery with the team of engineers and technicians from Koenig Machinery, with precision installation and in-depth training. Solid plate frame with fire-proof bricks. Hypcut software with cloud control system(allows you to track the progress of production team live from the office)

Technical Parameters	Specifications
Laser Power	12kW, 20kW, 30kW
Bed Size	6000 x 2500mm with loading table (Additional size options 4000x1500/2000/2500, 6000x1500/2000, 8000x2500, 12000x2500mm)
Machines Size	14935*4018*2520mm
Laser Source Type	MAX, Raycus or IPG
Laser Head Type	Automatic focussing laser head BOCI BLT 6 Series
Cooling Type	Industrial Water Cooling – S&A water chiller
Moving Speed	200m/min
Acceleration	2.5G
Laser Output Control	0-100% set by software
Drive Method	YYC Rack and pinion system, Moto Reducer gear reducer, with Yaskawa motor drive
Motor Power	X axis = 1800W, Y axis = 4400W, Z axis = 750W
Positioning Accuracy	0.02mm
Re-positioning Accuracy	0.02mm
Minimum Line Width	0.1mm
Controlling Software	Hypcut 8000S, including production nesting, edge seeking, automatic crash protection, cloud control and live reporting
Graphic Format Supported	Graphics files - Ai, DXF, PLT, Gerber, G code – MaterCam, Type3, Wentai etc.
Compatible Software	Illustrator, photoshop, CorelDraw, Autocad, Solidworks, MaterCam, Type3, Wentai etc.
Colour Separation	Yes (imports colours to control cutting layers)
Auxiliary Equipment	Exhaust Fan, Industrial water-cooling unit
Power Supply	Machine: 12kW = 415V 50Hz 100amp 20kW = 415V 50Hz 150amp 30kW = Please discuss with your Koenig representative
Gas Regulation	Software controlled electronic low- pressure O2 regulator (for fine adjustment at low pressure) And high pressure N2 and Compressed air electronic regulator (high pressure cutting)
Gas Connection	O2 (mild steel and copper cutting) – 4 pack min Min 99.7% purity – 10m3/h maximum flow rate – 10bar max pressure N2 (Stainless, Aluminium, Brass and thin Mild steel cutting) – 9 pack min Min 99.9% purity – 40m3/h maximum flow rate – 24bar max pressure Compressed air (Stainless, Aluminium, Brass and thin Mild steel cutting) SEE OUR 20DHY-20Bar COMPRESSOR OPTIONS
Working Environment	Temperature:0-45C, Humidity 5-95% (No Condensate Water)

Fiber Power Explained

What Power Do You Really Need for Your Application?



What Do We Recommend For Reliable Production?

800W Laser Source

- Up to 8mm Carbon steel
- Up to 4mm Stainless steel
- Up to 2mm Aluminium
- Up to 2mm Brass/non-ferrous

3kW Laser Source

- Up to 20mm Carbon steel
- Up to 12mm Stainless steel
- Up to 10mm Aluminium
- Up to 7mm Brass/non-ferrous

20kW Laser Source

- Up to 50mm Carbon steel
- Up to 40mm Stainless steel
- Up to 30 mm Aluminium
- Up to 30mm Brass/non-ferrous

1200W Laser Source

- Up to 12mm Carbon steel
- Up to 6mm Stainless steel
- Up to 3mm Aluminium
- Up to 3mm Brass/non-ferrous

6kW Laser Source

- Up to 25mm Carbon steel
- Up to 18mm Stainless steel
- Up to 16mm Aluminium
- Up to 10mm Brass/non-ferrous

30kW Laser Source

- Up to 60mm Carbon steel
- Up to 40mm Stainless steel
- Up to 40mm Aluminium
- Up to 40mm Brass/non-ferrous

1.5kW Laser Source

- Up to 14mm Carbon steel
- Up to 7mm Stainless steel
- Up to 5mm Aluminium
- Up to 3mm Brass/non-ferrous

12kW Laser Source

- Up to 40mm Carbon steel
- Up to 40mm Stainless steel
- Up to 25mm Aluminium
- Up to 16mm Brass/non-ferrous

Note:

- For Aluminium/Brass/Copper (non-ferrous) cutting, in 1.5kW - IPG laser source is required
- For Aluminium/Brass/Copper (non-ferrous) cutting, in 3kW and above - All available brands are safe
- For tube cutting, please contact Koenig to confirm laser power requirements, as thickness capacities vary from those listed above.

Fiber Laser Options & Accessories

\$24,500+GST



20DHY

20Bar Pressure compressor for Air cutting. Providing a cheap manufacturing alternative to Nitrogen and Oxygen (for thin Mild Steel and Copper cutting) - Work safe certified.

\$9,500+GST



15 Bar Screw Compressor

Single-phase compressor that is best paired with the M2/M3 Fiber Laser. Can be used for cutting thin Mild Steel, Stainless Steel and Aluminium.

\$2,800+GST



Safety Light Curtain System

Recommended for all open bed machines and rear loading tables - stops the machine when someone enters the light curtain perimeter.

\$8,200+GST



PA200FSIQ

4 filter system including Hepa and Carbon, for combined metal/non-metal cutting (For KM1309FC/KM1313FC, KM1325FC).

\$9,500+GST



TODC4L

For LF1309, LF1313, LF1325L, LF3015LN/CN, LF3015P-Pro, (up to 3Kw) 4pcs filter cartridge, air flow is 4000m³/h, 380V/50HZ, 5.5kW, 0.6MPa

\$11,500+GST



TODC6L

TODC6L - For LF3015P-Pro, LF3015GA-Pro, LF3015GA (up to 6kW), LF3015GAR (up to 3kW)
For LF6025GT/GH (up to 3Kw)
6pcs filter cartridge, air flow is 6000m³/h, 380V/50HZ, 7.5kW, 0.6MPa

\$14,500+GST



TODC8L

TODC8L - LF3015GA-Pro, LF3015GA, LF3015GAR (up to 12kW)
For LF3015GAR, LF6025GT/GH (6Kw and above)
8pcs filter cartridge, air flow is 8000m3/h, 380V/50HZ, 11kW,
0.6MPa

\$2,950+GST



Gas Attachment Pack

N2 and O2 Regulators plus 2* hoses and all fittings to connect you gas packs to the machine (2*5m included as standard - longer hoses available on request)

\$1,850+GST



M-Series Rotary

Versatile Servo-powered rotary unit suitable for M2 and M3.
Suitable for tube diameter 15-150mm and up to 1200mm length. Max weight of tube: 35kg.

\$2,450+GST



M Series Gas Attachment Pack

O2 (Type 10 fitting) and N2 regulator (Type 50 or 51 fitting) with adapters to suit 8mm gas hose on M2 and M3 machine.

\$2,450+GST



CypNest

Software upgrade for advances nesting, individual part rotation control etc. (Not required for LF6025GH machine).

\$4,900+GST



Tubest

Software upgrade for complex tube cutting. Allows for full profile/detailed design within the program. Required for open profile cutting (C-channel, I-beam etc).

⚡ Koenig Machinery - Over 10 Years!

Your Trusted Local Machine Solution Expert

Australian-Based Sales, Service & Support You Can Rely On

For over 10 years, Koenig Machinery has been delivering best-in-class CNC laser solutions to businesses across Australia. With locally based technicians in Sydney, Melbourne and Brisbane, we provide nationwide coverage, ensuring our customers receive fast, reliable, and expert technical support whenever needed. Our Australian-based customer service and technical support teams operate from our Melbourne head office, delivering responsive assistance tailored to local business needs.

Investment In Innovation & Customer Experience

At Koenig Machinery, we are committed to continuous investment in technology, facilities, and customer service. Australia's largest range of demonstration machines in our Brisbane, Sydney and Melbourne showrooms, where we feature the latest in CNC laser machinery, providing live demonstrations and a dedicated space for technology development. We believe in empowering our customers with firsthand experience of the precision, efficiency, and reliability that our machines offer.

Strong Industry Partnerships & Long-Term Commitment

As a trusted supplier with industry-leading manufacturer relationships, we provide Australian businesses with high-quality CNC laser equipment designed for performance and durability. Our commitment to long-term customer relationships is reflected in our ongoing investment in technical staff, service and support teams, as well as enhanced marketing and management infrastructure. These strategic investments enable us to meet the growing demands of our expanding customer base across the Australian continent.

Why Choose Koenig Machinery?

- Locally based Australian technicians covering the entire country.
- Australian-based technical support and customer service from our Melbourne head office.
- Over 10 years of trusted service to Australian businesses.
- Ongoing investment in a state-of-the-art Melbourne showroom with the latest CNC laser technology.
- Commitment to long-term partnerships with expanded service, support, and management capabilities.
- Experience the Koenig Machinery difference – your partner in precision and performance.

Contact us today to learn more!



Showrooms

View a machine in one of our showrooms located in Melbourne, Sydney or Queensland and have your questions answered by one of our qualified in-house technicians.



Victoria - Head Office and Showroom

55 Metrolink Circuit
Campbellfield VIC 3061
Open: 9am-5pm Monday - Friday
PH: (03) 9037 0826



NSW - Branch and Showroom

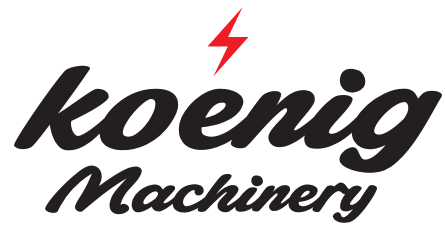
U10, 242D New Line Rd
Dural NSW 2158
Open: 9am-5pm Monday - Friday
PH: (02) 8408 0265



QLD - Branch and Showroom

4/23 Ford Rd
Coomera QLD 4209
Open: 9am-5pm Monday - Friday
PH: (07) 2802 5475

**Prices, features, and imagery are subject to change without notice.
Please check our website for the most up-to-date information.**



⚡ Services



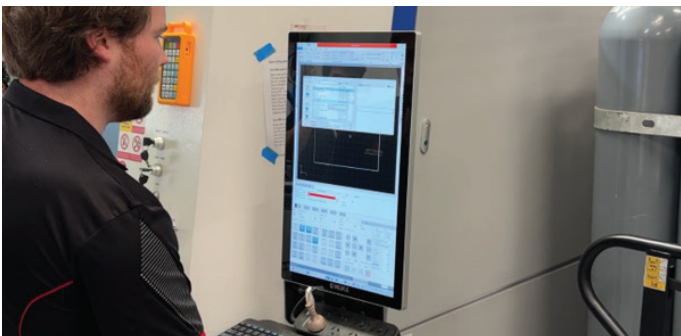
Machine Servicing

We offer scheduled maintenance and onsite service calls at reasonable rates. Our technicians work with you to maximize uptime and keep your business running economically.



Technical Support

Enjoy free lifetime phone and email support by Australians in Melbourne, Sydney and Brisbane. We provide onsite assistance and technical support to help you identify the right solution.



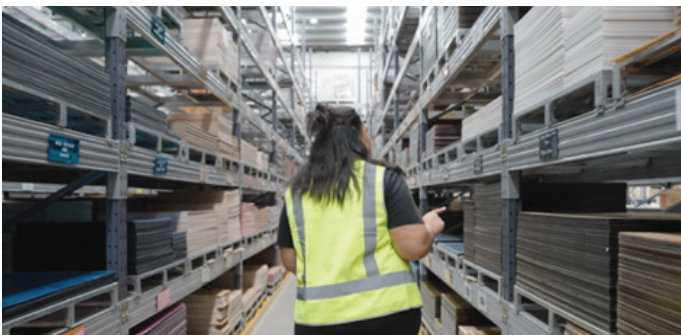
Operator Training

Our comprehensive on-site training ensures your team is confident in software, machine procedures, and maintenance. We empower you to run your equipment solo and successfully.



Machine Installations

Highly trained technicians handle your professional installation, assembly, and leveling. We calibrate the machine system and settings specifically to your needs to ensure optimal performance.



Machine Consumable Warehouse

As a major Australian supplier, we stock over 100 varieties of acrylic sheets, laser plywood, nozzles, and lenses. One-stop sourcing ensures your production never stops.



Machine Spare Parts Warehouse

Our local warehouses stock essential components like air compressors and water chillers. We ensure product compatibility and fast shipping Australia-wide to reduce your setup hassles.

⚡ Testimonials



Matthew Dawson

“Partnering with Koenig Machinery allowed us to internalise production, ensuring total quality control. Their 3kW GA Pro delivered immediate ROI, faster turnarounds, and complete engineering independence.”

RMS Manufacturing, Victoria AUS

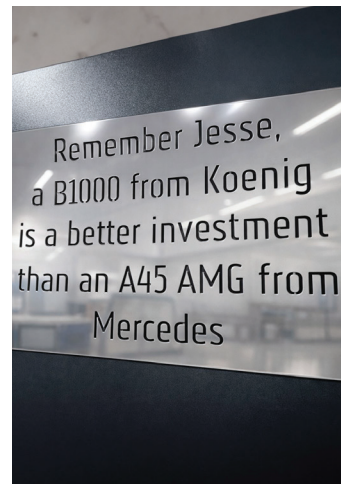
“Koenig has been excellent. Their support is levels above the competition, and the 75% reduction in production time has transformed our business. We have no regrets.”

SPS Drains, New South Wales AUS



“Since installing our Koenig fiber laser, we’ve slashed lead times from weeks to days. Their local support and high-precision machinery have revolutionized our production efficiency.”

Elanora Signs, New South Wales AUS



“Koenig is a stable partner. Their support is a phone call away, and the efficiency is undeniable—our finishing time dropped from twenty hours to twenty minutes.”

Maker Supplies, South Australia AUS