

# Sheet Fiber Laser With Exchange Tables

## LF3015GA PRO

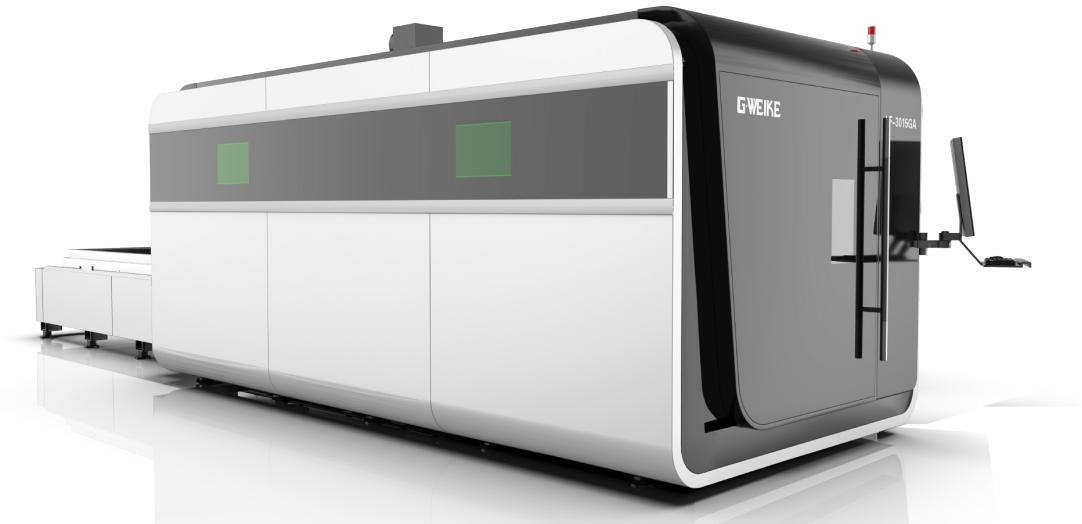
**Bed Size:** 1500x3000mm

**Fiber Laser Source:** MAX, Raycus or IPG

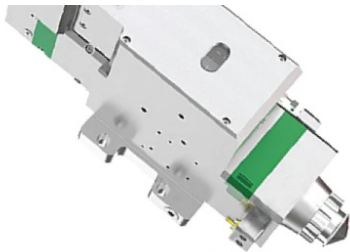
**Power:** 1.5kW, 3kW, 6kW, 12kW

FROM

**\$93,500+GST**

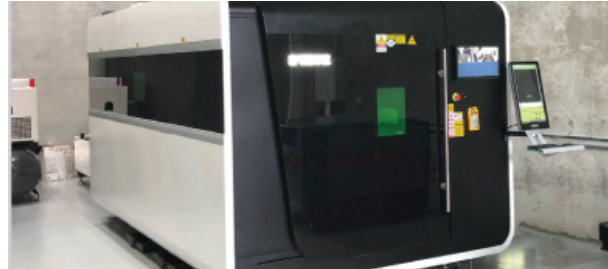
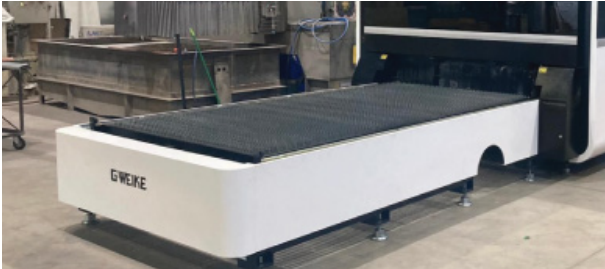
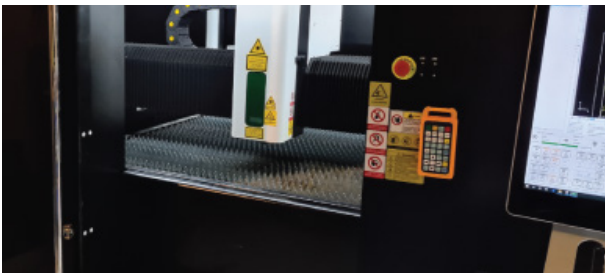


The LF3015GA Pro is our most popular compact enclosed machine with built in electrical cabinet and loading table. Taking up less space on the factory floor and less space for international freight than the LF3015GA, this machine is more affordable than ever before, and now comes with upgraded motors for 1.5G acceleration and 120m/min moving speed. Cut in the fully enclosed main table while load/unload on the rear table, for near-continuous cutting, greatly increasing your output.



### Features:

- 3000x1500mm fully enclosed machine with loading table
- Fully enclosed main table, with interlocking safety sensors
- Compact design with built-in electronic cabinet
- Built in internal cameras and monitoring screen
- Cypcut software - Easy to use and compatible with most files
- Automatic edge seeking/ nesting / fly-cutting etc.
- BCS100 Automatic material tracking - Follows material surface allowing cutting of materials with slight bending or warping
- BOCI or Raytools precision automatic focussing laser head
- Large Portrait style monitor screen
- Built-in computer, screen, and wireless controller
- Aviation 3rd generation aluminium gantry - Lightweight/ strong
- YYC rack pinion and gear system
- **MOTOR UPGRADE** - Yaskawa motor drive - 1.5G Acceleration
- French Moto Reducer gear reducer
- Heavy pallet welded bed - for increased stability and lifetime
- Automatic lubrication system
- Ball bearing rollers for loading on the front
- Drive assembly below the bed on both sides allowing for easy loading and offloading
- Head tracking under-table exhaust system- follows the head while cutting for maximum extraction, exhaust fan included
- Electronic regulators for all gas connections O2, N2 and com-compressed air, allowing for fully software-controlled pressure

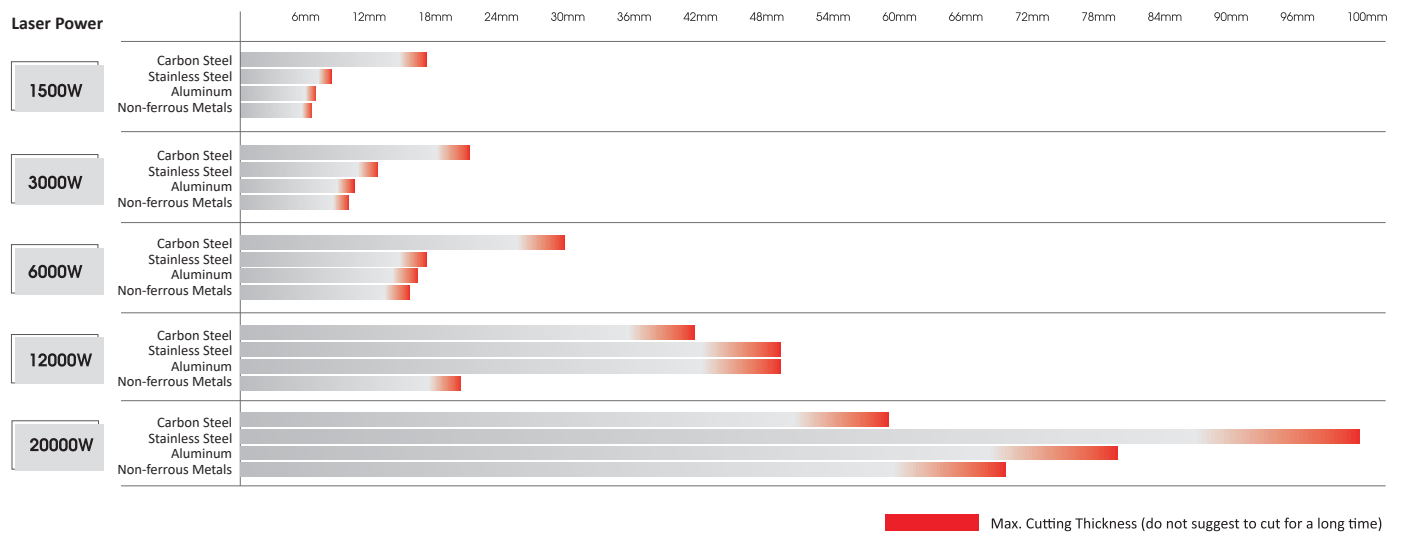


Highlighting above the compact all-in-one design, with loading table at the rear. See the wide-span opening door, camera monitoring screen and large portrait style control screen. With Raytools or BOCI automatic focussing laser head, Cypcut software (with nesting, fly cutting as shown above, edge seeking and crash protection) and BCS controller tracking this is the top of the line machine, only compact and at a modest price.

Technical Parameters	Specifications
Laser Power	1.5kW, 3kW, 6kW, 12kW
Bed Size	3000 x 1500mm with loading table (4000x1500, 4000x2000, 4000x2500mm available)
Machines Size	8586*2280*2429mm
Laser Source Type	MAX, Raycus or IPG
Laser Head Type	Automatic focussing laser head 1.5kW = Raytools BM111 3kW = BOCI BLT 4 Series 6kW = BOCI BLT 4 Series 12kW = BOCI BLT 6 Series with Watercooled Nozzle
Cooling Type	Industrial Water Cooling – S&A water chiller
Moving Speed	120m/min
Acceleration	1.5G
Laser Output Control	0-100% set by software
Drive Method	YYC Rack and pinion system, Moto Reducer gear reducer, with Yaskawa motor drive
Positioning Accuracy	0.03mm
Re-positioning Accuracy	0.02mm
Minimum Line Width	0.1mm
Controlling Software	Cypcut Control System 2000E, including nesting, edge seeking and automatic crash protection
Graphic Format Supported	Graphics files - Ai, DXF, PLT, Gerber, G code – MaterCam, Type3, Wentai etc.
Compatible Software	Illustrator, photoshop, CorelDraw, Autocad, Solidworks, MaterCam, Type3, Wentai etc.
Colour Separation	Yes (imports colours to control cutting layers)
Auxiliary Equipment	Exhaust Fan, Industrial water-cooling unit
Power Supply	Machine: 1.5kW = 415V 50Hz 32amp 3kW = 415V 50Hz 50amp 6kW = 415V 50Hz 63amp 12kW = 415V 50Hz 100amp
Gas Regulation	Software controlled electronic low- pressure O2 regulator (for fine adjustment at low pressure) And high pressure N2 and Compressed air electronic regulator (high pressure cutting)
Gas Connection	O2 (mild steel and copper cutting) – 4 pack min Min 99.7% purity – 10m3/h maximum flow rate – 10bar max pressure N2 (Stainless, Aluminium, Brass and thin Mild steel cutting) – 9 pack min Min 99.9% purity – 40m3/h maximum flow rate – 24bar max pressure <b>Compressed air (Stainless, Aluminium, Brass and thin Mild steel cutting)</b> <b>SEE OUR 20DHY-20Bar COMPRESSOR OPTIONS</b>
Working Environment	Temperature:0-45C, Humidity 5-95% (No Condensate Water)

# Fiber Power Explained

## What Power Do You Really Need for Your Application?



## What Do We Recommend For Reliable Production?

### 800W Laser Source

- Up to 8mm Carbon steel
- Up to 4mm Stainless steel
- Up to 2mm Aluminium
- Up to 2mm Brass/non-ferrous

### 3kW Laser Source

- Up to 20mm Carbon steel
- Up to 12mm Stainless steel
- Up to 10mm Aluminium
- Up to 7mm Brass/non-ferrous

### 20kW Laser Source

- Up to 50mm Carbon steel
- Up to 40mm Stainless steel
- Up to 30 mm Aluminium
- Up to 30mm Brass/non-ferrous

### 1200W Laser Source

- Up to 12mm Carbon steel
- Up to 6mm Stainless steel
- Up to 3mm Aluminium
- Up to 3mm Brass/non-ferrous

### 6kW Laser Source

- Up to 25mm Carbon steel
- Up to 18mm Stainless steel
- Up to 16mm Aluminium
- Up to 10mm Brass/non-ferrous

### 30kW Laser Source

- Up to 60mm Carbon steel
- Up to 40mm Stainless steel
- Up to 40mm Aluminium
- Up to 40mm Brass/non-ferrous

### 1.5kW Laser Source

- Up to 14mm Carbon steel
- Up to 7mm Stainless steel
- Up to 5mm Aluminium
- Up to 3mm Brass/non-ferrous

### 12kW Laser Source

- Up to 40mm Carbon steel
- Up to 40mm Stainless steel
- Up to 25mm Aluminium
- Up to 16mm Brass/non-ferrous

### Note:

- For Aluminium/Brass/Copper (non-ferrous) cutting, in 1.5kW - IPG laser source is required
- For Aluminium/Brass/Copper (non-ferrous) cutting, in 3kW and above - All available brands are safe
- For tube cutting, please contact Koenig to confirm laser power requirements, as thickness capacities vary from those listed above.



# Fiber Laser Options & Accessories

**\$24,500+GST**



## 20DHY

20Bar Pressure compressor for Air cutting. Providing a cheap manufacturing alternative to Nitrogen and Oxygen (for thin Mild Steel and Copper cutting) - Work safe certified.

**\$9,500+GST**



## 15 Bar Screw Compressor

Single-phase compressor that is best paired with the M2/M3 Fiber Laser. Can be used for cutting thin Mild Steel, Stainless Steel and Aluminium.

**\$2,800+GST**



## Safety Light Curtain System

Recommended for all open bed machines and rear loading tables - stops the machine when someone enters the light curtain perimeter.

**\$8,200+GST**



## PA200FSIQ

4 filter system including Hepa and Carbon, for combined metal/non-metal cutting (For KM1309FC/KM1313FC, KM1325FC).

**\$9,500+GST**



## TODC4L

For LF1309, LF1313, LF1325L, LF3015LN/CN, LF3015P-Pro, (up to 3Kw) 4pcs filter cartridge, air flow is 4000m<sup>3</sup>/h, 380V/50HZ, 5.5kW, 0.6MPa

**\$11,500+GST**



## TODC6L

TODC6L - For LF3015P-Pro, LF3015GA-Pro, LF3015GA (up to 6kW), LF3015GAR (up to 3kW)  
For LF6025GT/GH (up to 3Kw)  
6pcs filter cartridge, air flow is 6000m<sup>3</sup>/h, 380V/50HZ, 7.5kW, 0.6MPa

**\$14,500+GST**



**TODC8L**

TODC8L - LF3015GA-Pro, LF3015GA, LF3015GAR (up to 12kW)  
For LF3015GAR, LF6025GT/GH (6Kw and above)  
8pcs filter cartridge, air flow is 8000m3/h, 380V/50HZ, 11kW,  
0.6MPa

**\$2,950+GST**



**Gas Attachment Pack**

N2 and O2 Regulators plus 2\* hoses and all fittings to connect you gas packs to the machine (2\*5m included as standard - longer hoses available on request)

**\$1,850+GST**



**M-Series Rotary**

Versatile Servo-powered rotary unit suitable for M2 and M3.  
Suitable for tube diameter 15-150mm and up to 1200mm length. Max weight of tube: 35kg.

**\$2,450+GST**



**M Series Gas Attachment Pack**

O2 (Type 10 fitting) and N2 regulator (Type 50 or 51 fitting) with adapters to suit 8mm gas hose on M2 and M3 machine.

**\$2,450+GST**



**CypNest**

Software upgrade for advances nesting, individual part rotation control etc. (Not required for LF6025GH machine).

**\$4,900+GST**



**Tubest**

Software upgrade for complex tube cutting. Allows for full profile/detailed design within the program. Required for open profile cutting (C-channel, I-beam etc).

# ⚡ Koenig Machinery - Over 10 Years!

## Your Trusted Local Machine Solution Expert

### Australian-Based Sales, Service & Support You Can Rely On

For over 10 years, Koenig Machinery has been delivering best-in-class CNC laser solutions to businesses across Australia. With locally based technicians in Sydney, Melbourne and Brisbane, we provide nationwide coverage, ensuring our customers receive fast, reliable, and expert technical support whenever needed. Our Australian-based customer service and technical support teams operate from our Melbourne head office, delivering responsive assistance tailored to local business needs.

### Investment In Innovation & Customer Experience

At Koenig Machinery, we are committed to continuous investment in technology, facilities, and customer service. Australia's largest range of demonstration machines in our Brisbane, Sydney and Melbourne showrooms, where we feature the latest in CNC laser machinery, providing live demonstrations and a dedicated space for technology development. We believe in empowering our customers with firsthand experience of the precision, efficiency, and reliability that our machines offer.

### Strong Industry Partnerships & Long-Term Commitment

As a trusted supplier with industry-leading manufacturer relationships, we provide Australian businesses with high-quality CNC laser equipment designed for performance and durability. Our commitment to long-term customer relationships is reflected in our ongoing investment in technical staff, service and support teams, as well as enhanced marketing and management infrastructure. These strategic investments enable us to meet the growing demands of our expanding customer base across the Australian continent.

### Why Choose Koenig Machinery?

- Locally based Australian technicians covering the entire country.
- Australian-based technical support and customer service from our Melbourne head office.
- Over 10 years of trusted service to Australian businesses.
- Ongoing investment in a state-of-the-art Melbourne showroom with the latest CNC laser technology.
- Commitment to long-term partnerships with expanded service, support, and management capabilities.
- Experience the Koenig Machinery difference – your partner in precision and performance.

Contact us today to learn more!



## Showrooms

View a machine in one of our showrooms located in Melbourne, Sydney or Queensland and have your questions answered by one of our qualified in-house technicians.



### Victoria - Head Office and Showroom

55 Metrolink Circuit  
Campbellfield VIC 3061  
Open: 9am-5pm Monday - Friday  
PH: (03) 9037 0826



### NSW - Branch and Showroom

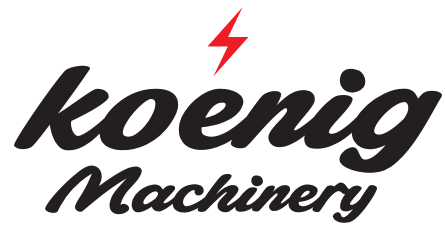
U10, 242D New Line Rd  
Dural NSW 2158  
Open: 9am-5pm Monday - Friday  
PH: (02) 8408 0265



### QLD - Branch and Showroom

4/23 Ford Rd  
Coomera QLD 4209  
Open: 9am-5pm Monday - Friday  
PH: (07) 2802 5475

Prices, features, and imagery are subject to change without notice.  
Please check our website for the most up-to-date information.



## ⚡ Services



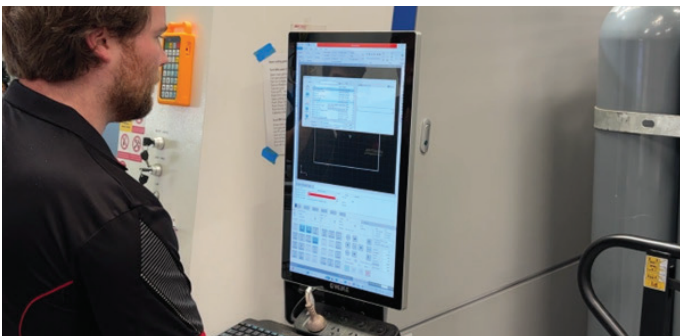
### Machine Servicing

We offer scheduled maintenance and onsite service calls at reasonable rates. Our technicians work with you to maximize uptime and keep your business running economically.



### Technical Support

Enjoy free lifetime phone and email support by Australians in Melbourne, Sydney and Brisbane. We provide onsite assistance and technical support to help you identify the right solution.



### Operator Training

Our comprehensive on-site training ensures your team is confident in software, machine procedures, and maintenance. We empower you to run your equipment solo and successfully.



### Machine Installations

Highly trained technicians handle your professional installation, assembly, and leveling. We calibrate the machine system and settings specifically to your needs to ensure optimal performance.



### Machine Consumable Warehouse

As a major Australian supplier, we stock over 100 varieties of acrylic sheets, laser plywood, nozzles, and lenses. One-stop sourcing ensures your production never stops.



### Machine Spare Parts Warehouse

Our local warehouses stock essential components like air compressors and water chillers. We ensure product compatibility and fast shipping Australia-wide to reduce your setup hassles.

## ⚡ Testimonials



Matthew Dawson

“Partnering with Koenig Machinery allowed us to internalise production, ensuring total quality control. Their 3kW GA Pro delivered immediate ROI, faster turnarounds, and complete engineering independence.”

**RMS Manufacturing, Victoria AUS**

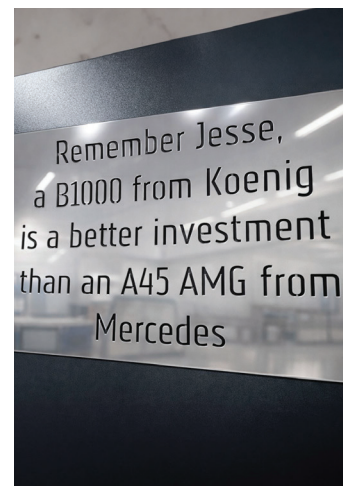
“Koenig has been excellent. Their support is levels above the competition, and the 75% reduction in production time has transformed our business. We have no regrets.”

**SPS Drains, New South Wales AUS**



“Since installing our Koenig fiber laser, we’ve slashed lead times from weeks to days. Their local support and high-precision machinery have revolutionized our production efficiency.”

**Elanora Signs, New South Wales AUS**



“Koenig is a stable partner. Their support is a phone call away, and the efficiency is undeniable—our finishing time dropped from twenty hours to twenty minutes.”

**Maker Supplies, South Australia AUS**